



SPIKE OF THE MONTH

Congratulations!



Karen Bittner, CU Mortgage Direct

Congratulations to **Karen Bittner, CU Mortgage Direct** for being named June Spike of the Month*

**The "Spike of the Month" is awarded to an HBASE member who recruits the most new members during the previous month.*

Membershi-p-alooza Success

Thank you to the following members who participated in the Membershi-p-alooza:

Gary Van Zee, The Insurance Connection
Steve Norfolk, Norfolk Financial Group
Shawna Kleinwolterink, CU Mortgage Direct

Karen Bittner, CU Mortgage Direct
Russ Pies, Pro-Build
Lisa Malone, Liberty National Bank
Kyle Eberts, Eberts Construction
Candi Bartels, Viereck Commercial Real Estate LLC

The Palooza volunteers made retention and recruitment calls on Thursday, May 14 at the HBASE Office. Afterwards, they enjoyed a fun social.



Special Anniversaries

45 Years

**Mid American Energy
United Rentals
Gage Brothers**

30 Years

**Schoenhard's Custom Cabinetry, Inc
Shaykett Appraisal Co., Inc.
Insurance Connection, The
Creative Surfaces Inc./The Stone Center**

20 Years

Building Products Inc

5 Years

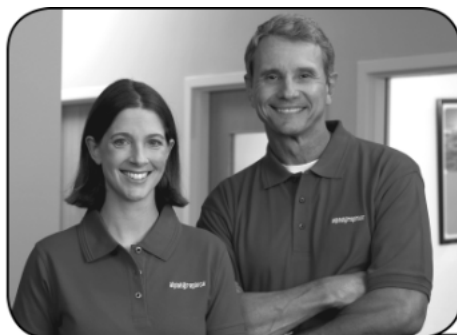
**Hartung Homes LLC
City of Tea
First Dakota Horticulture**

Canceled

Members

The following businesses have recently canceled their HBASE membership.

- Help U Sell Out West
- Exclusive Dakota Homes
- Graff Roofing
- First Savings Bank
- Lacey Construction
- Bormann Homes
- Extreme Heating & Cooling



More than just a printer. A true partner.

Color • Oversized Printing • Design • Copying
Personalized Communications • Offset Printing
Digital Archiving • One-to-One Marketing
Online Ordering

alphagraphics®

DESIGN ■ COPY ■ PRINT ► COMMUNICATE
www.us451.alphagraphics.com

5020 S. Tennis Lane, Suite 1
Sioux Falls, SD 57108
One block east of 57th and Louise

605-334-7333
fax 605-334-7473
1-888-83-alpha
us451@alphagraphics.com



Renewing Members!

Congratulations and thank you to the following members who have renewed their membership and continue to support their trade Association. (please allow 60 days for names to appear on this list).

Company	Member Since
A & B Concrete, Inc.	2005
Action Professional Services	2008
Advertising Arts, Inc.	1992
Aho Northwest LLC	2007
Amazing Space	1993
Amesbury Group	1997
Billion GMC	2002
Brooks Construction Services	1955
Builder's Choice Cabinetry, Inc.	2006
Building Products Inc.	1988
City Of Tea	2004
CoTrust Mortgage, Inc.	1993
Creative Surfaces Inc./The Stone Center	1989
Culligan Water Conditioning	1957
Deffenbaugh Homes	2000
Dream Builder Company, The	2005
Energy State University	2008
Envision Companies, LLC	2007
First Dakota Horticulture	2004
Floor Coverings International	1993
G & P Construction, Inc.	2004
Gage Brothers	1963
Glass Doctor	2008
Gutter Express	2008
Hagen Rock & Gravel Co.	1992
Hanson Painting	2006
Harr Construction, LLC, G & D	1985
Hartung Homes LLC	2004
Hebron Brick Supply	2002
Herman Otten Construction Inc.	1996
Ideal Energy	2008
Insurance Connection, The	1989
JAYMAC, Inc.	2008
Jones Caulking & Tuckpointing, Inc.	2008
Karls TV-Audio & Appliance	1990
Kaskade Builders, Inc.	2005
LeBrun Landscaping, Inc	2008
Mariya Cleaning	2008
MidAmerican Energy	1963
Millers & Hass Builders, Inc	2008
Naatjes Concrete Inc.	1995
New Prairie Insulation, Inc.	1990
Oakland Irrigation LLC	2008
Pro-Build	1998
RADCO Truck Accessory Center	2006
Rainbow Play Systems of SD	1996
Ree Masonry Construction, Inc., Walter	1964
RJ Larsen Systems & Service	2003
Roger's Plumbing & Heating, Inc.	2007
Ronning Homes & Neighborhoods	1963
Sandro's Woodshed/Bufalo Ridge Beamery	1998
Sands Drywall Inc.	1996
Schoenhard's Custom Cabinetry, Inc	1979
SD Housing Dev. Authority	1986
Shaykett Appraisal Co., Inc.	1989
Showplace Kitchens	2000
T K Homes Inc	1990
Thurman Construction	1977
Twetten's Interiors	2007
United Rentals	1963
USA Garage Floor Store	2008
Wilsonart Solid Surface	2008
YardWorks	2007

New Membership Defenders Game

The Membership Committee is excited to announce the New Membership Defenders Game, a board game designed by NAHB. Members are divided into teams and assigned to a character game piece which moves around the Board based on membership activity.

The teams will be divided and assigned by industry classification as follows:

- ◆ "Constructo" - Builders/Developers
- ◆ "Grinder" - Trades Contractors
- ◆ "American Dream" - Financial
- ◆ "Joist" - Service Industry
- ◆ "2x4" - Building Materials Supplier

Game pieces will move three spaces for recruiting a new member and one space if their new members joins a committee, attends an event or recruits another new member.

Along the way, there are also spaces that give added challenges and rewards.

The game will end on August 14, 2009. There will be a wrap up party to celebrate our successes.

Congratulations!



Karen Bittner CU Mortgage Direct

Congratulations to
Karen Bittner,
CU Mortgage Direct for
being named June
Ambassador of the Month*

**The "Ambassador of the Month" is awarded to the HBASE Ambassador who earned the most points in April by contacting new members and attending membership events.*

AMBASSADOR OF THE MONTH



What if there were a way to make your house strikingly beautiful and at the same time not have to think about painting every five years or so. It's possible with James Hardie® siding with ColorPlus® Technology. Available in a wide range of colors, it resists peeling and cracking and comes with a 50-year product warranty and 15-year finish warranty. So it'll be as gorgeous years from now as it is the day it goes on. There are four million homes with James Hardie siding. Wouldn't it be great if yours were one of them. Visit jameshardie.com. Or call 1-866-4-HARDIE.


JamesHardie

**ColorPlus®
Technology**



Two Sioux Falls locations:
4000 S. Western • 339-0745
305 E. 8th Street • 336-2440

Weekdays 7-5, Sat. 7-Noon
schoenemans.com

Spring PARADE of HOMES™

Thanks to the 2009 Parade of Homes™ Committee

Chair: Chuck Wiseman, Complete Contracting, Inc.

Vice-Chair: Shane Hartung, Hartung Homes

J.J. Arens, Pella Windows & Doors

Candi Bartels, Viereck Commercial Real Estate, LLC

Rich Braley, Closets & More

Chris Buseman, Brushworks Custom Home Painting

Dudley Deffenbaugh, Deffenbaugh Homes

Nikki DeWit, Showplace Kitchens

Nordell Griebel, KMWF, PC

Kurt Hanson, CGB, CAPS, GMB, CGP, Home Tech, Inc.

Kim Hefner, Home Federal Bank

Sarah Hueners, Creative Surfaces Inc./ The Stone Center

Ryan Jansa, Van Buskirk Companies

Donna Jipp, Home Federal Bank

Rosie Kindt, Mahlander's Appliance & Lighting

Ajay Kitur, Traditions Limited

Greg Kneip, HJN Team

Kris Larson, Service First Federal Credit Union

Cathy LeDuc, CLC, Lamps & Shades, Inc.

Darren Lee, First Bank & Trust N.A./

First Mortgage

Faye Lee, Home Federal Bank

Norma Maurer, Wells Fargo Home Mortgage

Tim Miller, Millers & Hass Builders, Inc

Todd Nelson, Home Ideas Magazine/

Michels Communications

Joan Norquist, The Real Estate Company

Chane Patten, CGP, Builders Millwork &

Window, LLC/Design Center

Tom Ras mussen, Carpet One Floor

Covering Supplier

Rose Speer, Scott Lumber & Supply

Teresa Truog, Twetten's Interiors

Megan Wiseman, Complete Contracting, Inc.

Jill Young, Superior Construction

Mel Zelmer, Zelmer, Inc.

Kevin Zomermaand, Zome's Construction, Inc.

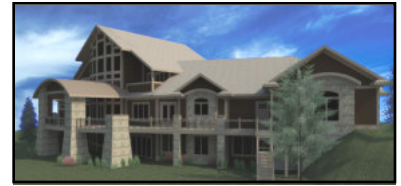
Special Notice:

The Fall Parade of Homes has been extended and will be held during the 2nd and 3rd weekends of September. More details will soon follow.

Send your comments or suggestions to the Parade of Homes Committee by emailing info@hbasiousempire.com.

Your feedback is appreciated!

Feature Home



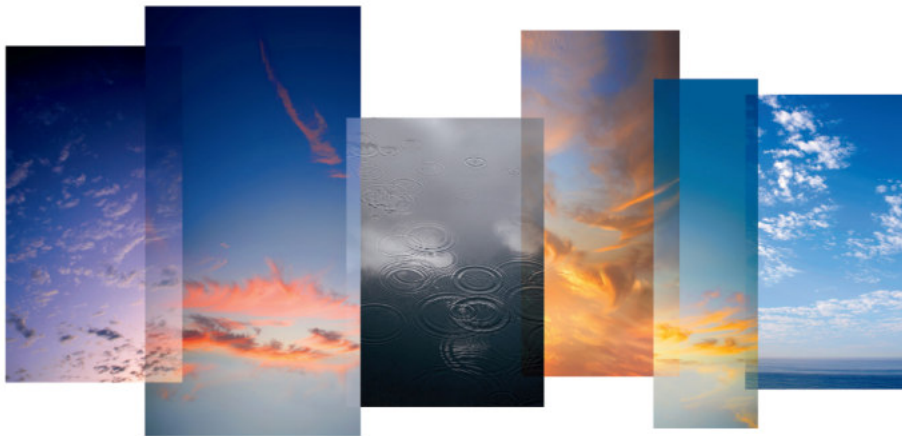
The Feature Home on the 2009 Spring Parade of Homes™, built by **Deffenbaugh Homes**, raised over \$4,000 for the Sioux Empire Home Builders Care Foundation.

The beautiful \$2 million-dollar-plus, rustic elegant home is located in rural Hartford This 5 bedroom, 7 bath home had over 1,600 attendees.

“Thank you to Deffenbaugh Homes for all their hard work in creating the Feature Home,” said **Susan Hilmoe, CGA, Care Foundation Board of Trustees Chair**. “By raising this money, we will continue to provide such services as Scholarships, Tools for Schools and Repair Affair.”



If you could design your dream window, what would it be?



Come in today and be inspired with all the latest Marvin has to offer.

myMarvin by

Mark Laita

Mark Laita
Photographer



2310 E. 10th St.
Sioux Falls, SD
605-335-7474



MARVIN
Windows and Doors

Built around you.®

myMarvin.com

Awards of Excellence Winners

The HBASE is proud to announce this year's Spring Parade Award of Excellence winners. During the judging competition numerous considerations were made, such as curb appeal, floor plan, kitchen design and use of lighting. These other special features were also considered: decorating, energy efficiency, marketing techniques and workmanship.

Single Family entries:

CATEGORY 1 – (UNDER \$160,000)

Allen Homes Inc.
910 Honeysuckle Dr., Harrisburg

CATEGORY 2 – (\$160,000 - \$190,000)

JayMac Inc.
5704 S Culbert Ave, SF

CATEGORY 3 – (\$190,000 - \$250,000)

Paul Fick Homes Inc.
4016 S Tuscany Ct, SF

CATEGORY 4 – (\$250,000 - \$350,000)

Zimmerman Construction Co. Inc.
7413 W 15th St, SF

CATEGORY 5 – (\$350,000 - \$425,000)

Todd Schmidt Construction Inc.
2604 E Carlyle Cr, SF

CATEGORY 6 – (\$425,000 - \$500,000)

Superior Construction
2020 Abbeystone Ct, SF

CATEGORY 7 - (\$500,000 - \$550,000)

Top Construction
1405 S Tayberry Ave, SF

CATEGORY 8 – (\$550,000 - \$600,000)

Kruetzfeldt Construction Co.
1349 Wicklow Ct, SF

CATEGORY 9 – (\$600,000 - \$700,000)

Complete Contracting, Inc.
6304 Callington Cr, SF

CATEGORY 10 –

(\$700,000 - \$1 Million)
Schildhauer Construction Inc.
216 W 77th St, SF

CATEGORY 11 – (Over \$1,000,000)

Creative Building Corporation
217 W 77th St, SF

Twin Homes/Townhomes/Condos entries:

CATEGORY A – (UNDER \$135,000)

Select Homes
6308 S Santa Rosa Cr, Unit D, SF

CATEGORY B – (\$135,000 - \$185,000)

Joshua Homes
2903 E Whisper Tr, SF

CATEGORY C – (\$185,000 - \$275,000)

Villas at Canterbury
5505 Eastbridge Pl, SF

CATEGORY D – (Over \$275,000)

MJK-Grand Arbor Village
7300 Grand Arbor Ct, SF

PARADE GOLD SPONSOR:
THORNTON
Flooring Outlet

PARADE SILVER SPONSOR:
MARVIN
Windows and Doors
Built around you.™

PARADE BRONZE SPONSOR:
Truss-Pro's, Inc.

Impressive Local Statistics

Sioux Falls is among the nation's 50 fastest growing metro areas and Rapid City is close behind. Fargo, ND was the only other Midwestern city to crack the top 50 in a report released by the US Census Bureau.

From July 1, 2007 to July 1, 2008, the Sioux Falls metro area grew by almost 6,000 people to an estimated population of 232,930. That area includes Minnehaha, Lincoln, Turner and McCook counties.

Sioux Falls ranked 19th in the nation for rapid population gains, with a growth rate of 2.6% per year. Lincoln County is the 12th fastest growing county in the nation at a rate of 5.3% annually and a population estimated at 39,713.



QUARTZ GRANITE TILE SOLID SURFACE LAMINATE

Premium laminate edges give our Barcelona, Valencia and Geneva the look of a solid stone surface at a fraction of the cost.

MI INDUSTRIES Fine Laminate Countertops

CREATIVE SURFACES INC.

Stone Center

M-F 10-6, Sat. 10-1
3603 W. 41st Street
Sioux Falls, SD 57106
Phone: (605) 362-5853
stonecenterusa.com